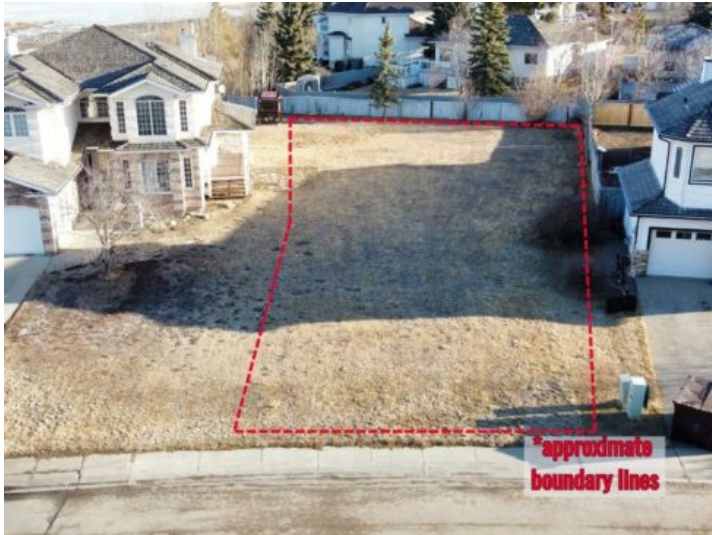


9106 119 Avenue
Grande Prairie, Alberta

MLS # A2120074



\$160,000

Division: Crystal Lake Estates

Lot Size: 0.24 Acre

Lot Feat: -

By Town: -

LLD: 31-71-5-W6

Zoning: RG

Water: -

Sewer: -

Utilities: -

Build your dream home in this quiet cul-de-sac in Crystal Lake Estates surrounded by established properties and mature trees with easy access to walking trails and playgrounds. With over 56 feet of street frontage and almost 1/4 acre of total space, there is plenty of room to build your dream home and develop a beautiful lot with potential for views of Crystal Lake. This is a unique opportunity at a great price so contact your favorite real estate professional for more information or to arrange a time to walk the lot.