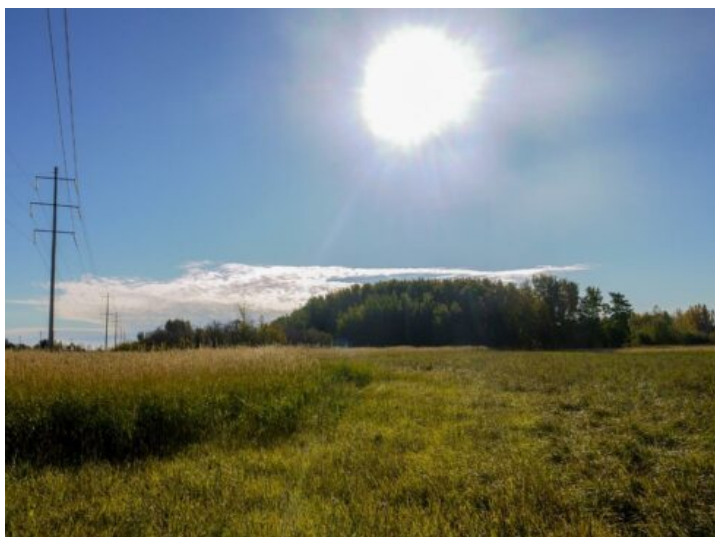


62083 Township 710 Other  
Rural Grande Prairie No. 1, County of, Alberta

MLS # A2148364



## \$1,800,000

Division: NONE

Lot Size: 8.00 Acres

Lot Feat: -

By Town: Grande Prairie

LLD: 33-70-6-W6

Zoning: RM-1

Water: -

Sewer: -

Utilities: -

Correction Line West Industrial. Just south of Grande Prairie with convenient access to Highway 40, Correction Line, 116 st and future southwest bypass. This RM-1 Industrial land is some of the only available Industrial land on south side of town. Subdivision is now approved for 5 and 8 acre lots and flexibility available for larger parcels if desired. Lots will include: paved roads, power, gas, Aquatera water and County taxes. Great visibility from Correction Line, 116 St and future South West Bypass. Contact your realtor for more details or information package. Vendor is a licensed REALTOR<sup>®</sup> in the Province of Alberta