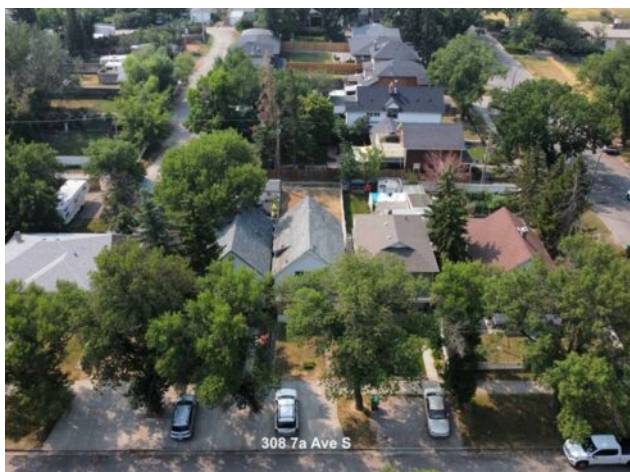


**308 7A Avenue S
Lethbridge, Alberta**

MLS # A2151251

\$145,500



Division:	London Road		
Type:	Residential/House		
Style:	1 and Half Storey		
Size:	1,510 sq.ft.	Age:	1909 (115 yrs old)
Beds:	1	Baths:	1
Garage:	Off Street, Parking Pad		
Lot Size:	0.07 Acre		
Lot Feat:	Back Lane, Back Yard		

Heating:	None	Water:	-
Floors:	See Remarks	Sewer:	-
Roof:	See Remarks	Condo Fee:	-
Basement:	See Remarks	LLD:	-
Exterior:	See Remarks	Zoning:	R-L(L)
Foundation:	See Remarks	Utilities:	-
Features:	See Remarks		

Inclusions: N/A

Being sold for as land value only, home is inaccessible and un-inhabitable Great building lot in the heart of London Road on a quiet tree-lined street, right down the street from Kiwanis Park. This lot is just steps from the Coulees, close to Scenic Drive and all the shops, restaurants, and services Downtown Lethbridge offers.